

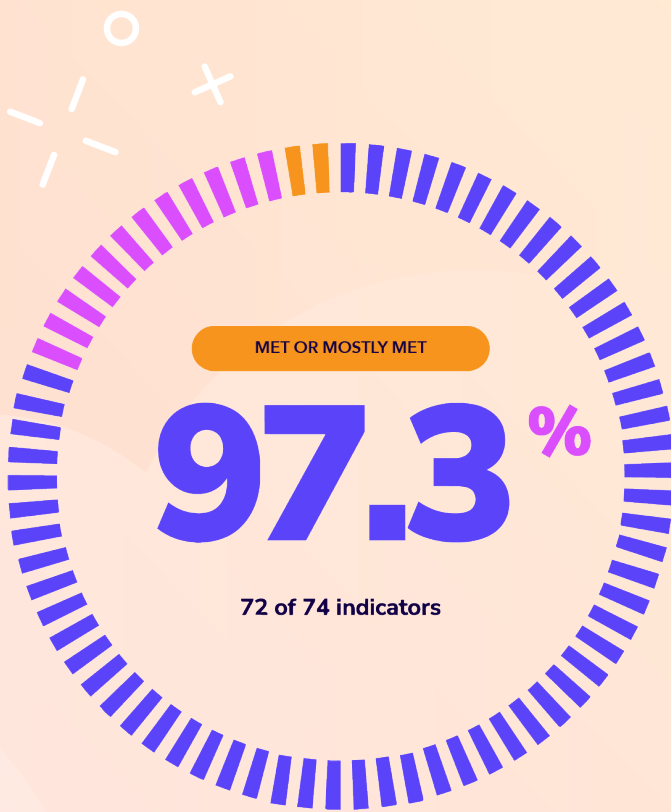


## A **Lavinia** Literacy Program

We appreciate The Reading League's rigorous and research-based process for evaluating curriculum aligned to the science of reading and are grateful for the opportunity to engage in this review.

**RedThread Literacy** is a comprehensive K–8 program that combines Foundations and Knowledge components, integrating engaging knowledge-building topics and themes with reading, writing, and foundational skills through explicit, systematic instruction grounded in evidence-based practices.

This publisher's response outlines key strengths, clarifications, and areas of continuous improvement as we continue to refine the program in alignment with research and classroom implementation.



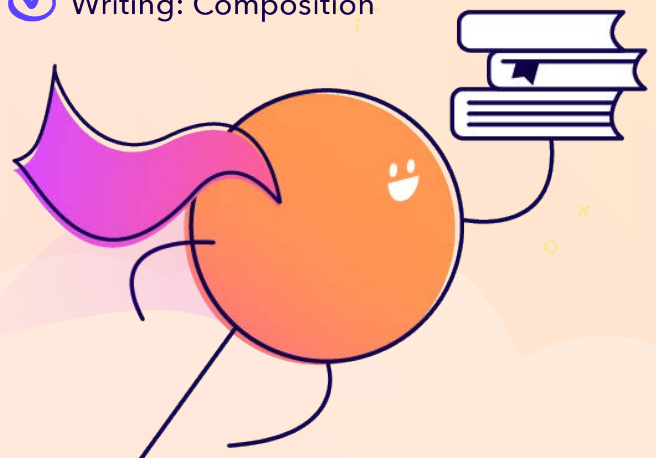
■ Met    ■ Mostly Met

Each tick on the ring represents a single evaluated indicator.

Only **two** of the 74 indicators scored below the "Mostly Met" threshold.

### Categories with **no red flags** or minimal evidence of red flags include:

- Phonological and Phoneme Awareness
- Phonics and Phonic Decoding
- Fluency
- Background Knowledge
- Vocabulary
- Language Structures
- Verbal Reasoning
- Literacy Knowledge
- Reading Comprehension
- Writing: Handwriting
- Writing: Spelling
- Writing: Composition



# REDTHREAD STRENGTHS

## Explicit Instruction Based on the Science of Reading



Reviewers noted that RedThread demonstrates strong alignment to evidence-based practices and the science of reading, with **"significant strengths in its commitment to the code-based aspects of reading"** and an **"explicit and sustained focus on decoding instruction."** Instruction is supported by clearly established routines that **"support teachers in consistent instructional delivery"** and reinforce predictability for students.

A coherent scope and sequence ensures that **"concepts are repeated across multiple years... [providing] an opportunity to strengthen and refine learning over time,"** while **"new concepts [are] introduced in a way that integrates previously taught skills,"** demonstrating cumulative and interleaved practice. Together, these elements promote accurate, automatic reading development grounded in research-based instruction.

## Knowledge-Building



Reviewers noted that RedThread builds strong content knowledge and maintains text coherence, with **"thematic cohesion across grade levels through recurring ideas and themes."** The report highlights that **"RedThread's knowledge-building approach is a notable strength,"** with effective alignment between the Foundations and Knowledge strands. **"Within each unit, texts are organized around a common theme,"** allowing students to build content knowledge through a combination of independent, decodable, and complex read-aloud texts. Together, these structures support sustained engagement with content and promote cumulative knowledge development across grades.

## Rich and Authentic Texts



Students reading rich and authentic texts is central to RedThread's design because we believe in developing a love of reading in students, in addition to confidence and proficiency. Reviewers noted this attention to rich texts, stating that **"RedThread makes a clear effort to move beyond traditional classic texts by including more contemporary and inclusive selections, as well as original texts developed by the program."**

RedThread intentionally prioritizes students engaging with whole texts, allowing them to build deeper understanding, sustain meaning across a complete work, and develop the stamina and joy that come from fully experiencing books reviewers described as **"authentic, complex, and diverse"** and **"high-interest"** for students.

## Integration of Reading and Writing



Reading and writing are purposefully integrated across the program, as **"writing is an essential component of both the Knowledge and Foundations strands."** As noted in the report, **"RedThread demonstrates strong integration of reading and writing through text-based writing tasks, literature responses, and explicit instruction in using textual evidence, ensuring that writing consistently reinforces comprehension."**

Writing tasks are grounded in texts, as **"projects are connected to the unit's reading,"** and **"literature responses are integrated throughout the units... to support connections between reading and writing."** Students also **"receive explicit instruction on how to strengthen their writing about reading,"** supporting both comprehension and composition.

# REDTHREAD STRENGTHS *(continued)*



## Explicit Vocabulary and Language Development

RedThread demonstrates strong explicit vocabulary and language development, as reviewers note that **"vocabulary instruction is explicit, and words are regularly reviewed and used by students,"** with **"Tier 2 vocabulary... explicitly taught in context and revisited through multiple exposures."** Students are exposed to **"a variety of complex texts with rich vocabulary and complex syntax beginning in kindergarten,"** supporting early and sustained language development.

Vocabulary is deeply integrated across instruction, as **"vocabulary is incorporated throughout each unit including teaching points, writing and discussion prompts, and read-alouds,"** and students **"encounter the word across additional components... providing repeated opportunities to engage with the word in meaningful contexts."** Together, these elements ensure students build both the breadth and depth of word knowledge.

# CONTINUOUS IMPROVEMENT

We value the insights provided in this report and are committed to continuous improvement. The following section addresses key areas identified for improvement and clarification.

## Practice Opportunities

Reviewers found that **"RedThread includes evidence of deliberate practice throughout its program,"** and noted that **"phonics skills build logically, with new concepts introduced in a way that integrates previously taught skills."** Reviewers also highlighted that **"the foundational skills scope and sequence documents for K–2 and 3–5 show that concepts are repeated across multiple years,"** reflecting opportunities for spaced and distributed practice. At the same time, reviewers identified an opportunity to strengthen the consistency of review and interleaved practice across lessons and units, particularly in the upper grades, to ensure students have more systematic opportunities to revisit and apply previously taught concepts over time.

In response, we are enhancing lesson materials to ensure review, cumulative practice, and interleaving are more systematically embedded across the year, particularly in Grades 3–5, to support mastery and automatization beyond teacher-identified challenge spots. We have also revised our detailed scope and sequence documents to outline specific weekly review concepts by grade level and are continuing to map interleaved practice vertically across grades to clarify when concepts are introduced, reinforced, and expected to reach proficiency.

## Usability

RedThread's intentional design prioritizes clarity, consistency, and usability, enabling teachers to plan efficiently and deliver structured, coherent instruction. Reviewers noted that **"the program includes systematic routines that follow a consistent instructional flow across units and grades,"** and that **"the repetition of these routines benefits both teachers and students, reinforcing predictability and instructional efficiency."** This consistency enhances usability by providing clear, predictable structures that support efficient planning and implementation. However, reviewers noted that **"Managing multiple resources, navigating online components, and using interactive features can be challenging."** We appreciate this feedback and are taking steps to improve usability, including a streamlined digital platform that gives teachers easier access to online resources and interactive features.

# CONTINUOUS IMPROVEMENT *(continued)*

## A Note on Formative Assessment and "Challenge Spots"

RedThread supports responsive, data-informed instruction through embedded formative assessment and routine-based practice. Reviewers noted that **"a significant part of instruction relies on teachers identifying 'challenge spots,' which require them to identify error patterns,"** and that these opportunities are embedded across "almost every routine in K–2 Foundations." This intentional design positions teachers to identify patterns in student performance and adjust instruction using targeted words, prompts, scaffolds, and systematic review opportunities.

To further support implementation, particularly for novice teachers developing expertise with diagnostic instruction, we expanded the instructional recommendations and "Responding to Assessments" resources available on our digital platform. These resources provide additional guidance for analyzing student errors, identifying instructional priorities, and selecting targeted next steps, further reinforcing teachers' ability to consistently apply explicit, systematic, and evidence-aligned practices in daily instruction.

## Extended Practice in Vocabulary and Grammar

Reviewers noted that while RedThread **"features a variety of strong vocabulary words aligned to its themes and topics,"** lessons could benefit from increased depth of practice. We are actively reviewing opportunities to deepen word learning through increased repeated exposure and application across varied contexts. We have already begun to address a similar need for greater cumulative practice in grammar.

Specifically, we have developed supplemental grammar lessons that specifically target key previously taught concepts in sentence composition, accompanied by clear guidance for teachers on implementation. We are committed to ensuring these additions strengthen both semantic knowledge and students' ability to apply grammatical understanding over time.

# OUR COMMITMENT

Lavinia Group is committed to continuously refining RedThread Literacy to ensure strong alignment with the science of reading and to support educators in delivering high-quality, evidence-based instruction. We are grateful for this review and will continue to evolve the program to better meet the needs of teachers and students.

